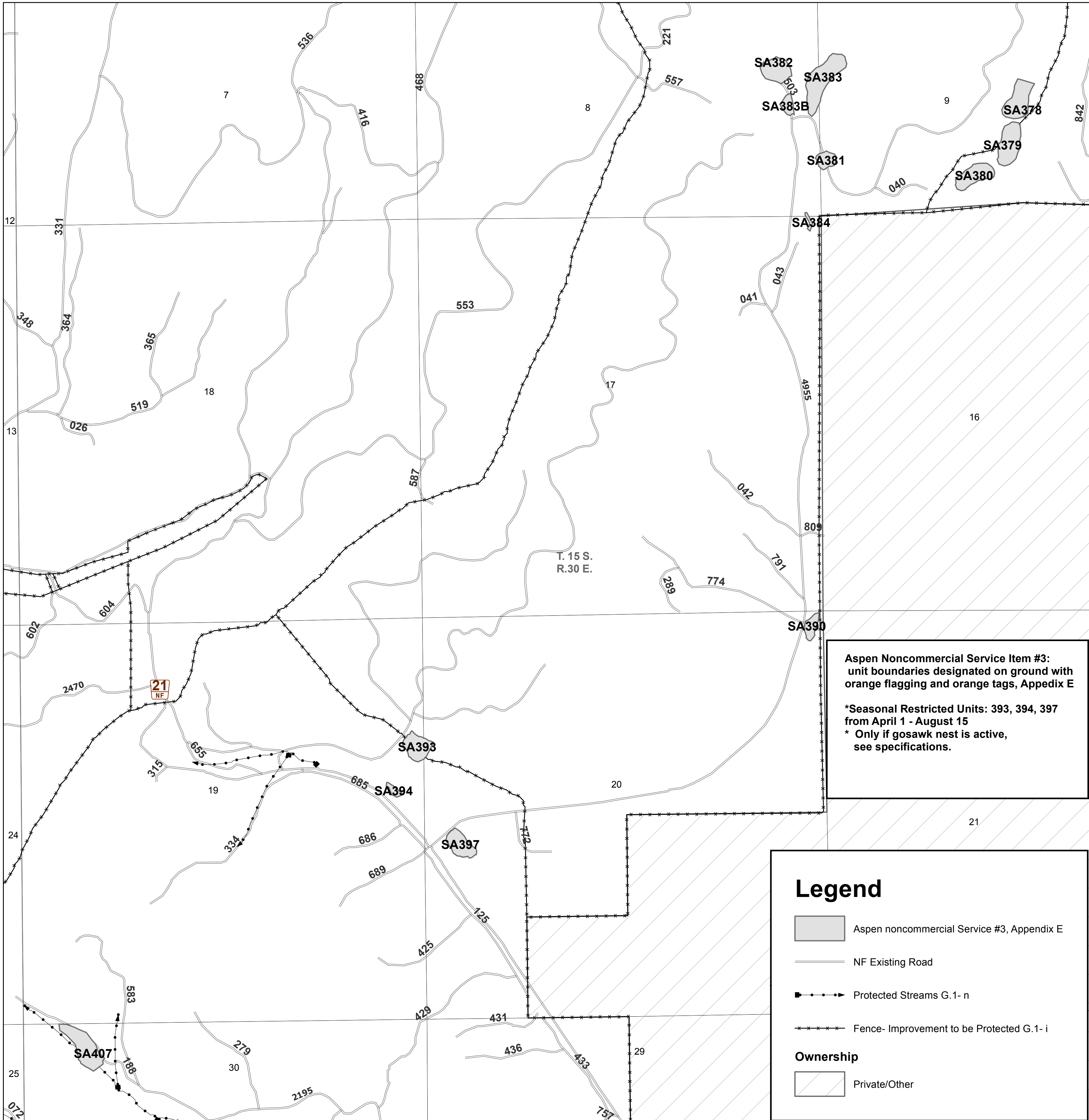


**Starr Aspen Stewardship Agreement Area Map:
Noncommercial Service Item #3, Appendix E
Malheur National Forest
Blue Mountain Ranger District**



Agreement Provision References:
Use of Roads by Partner. Applies to all roads identified in F.10 - C
Protect all improvements not limited to roads, trails, utilities, ditches, fences and signs. G.1 - i.


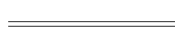
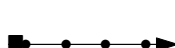


Date: 8/17/2020



Aspen Noncommercial Service Item #3:
unit boundaries designated on ground with
orange flagging and orange tags, Appedix E

*Seasonal Restricted Units: 393, 394, 397
from April 1 - August 15
* Only if gosawk nest is active,
see specifications.

Legend

-  Aspen noncommercial Service #3, Appendix E
 -  NF Existing Road
 -  Protected Streams G.1- n
 -  Fence- Improvement to be Protected G.1- i
- Ownership**
-  Private/Other

